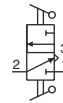
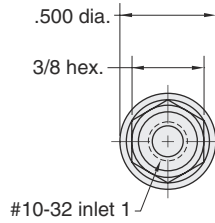
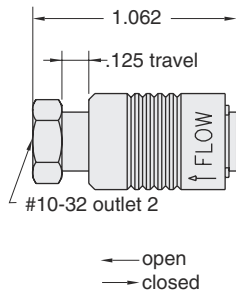




# SLEEVE VALVES

## SLV-□

Two position, 2-way or 3-way sleeve valve



**Medium:** air, water, or oil

**Stem Travel:** 1/8"

**Input Pressure:** 150 psig max.

**Air Flow:** @50 psig - 6.5 SCFM  
@100 psig - 11.8 SCFM

**Force to Actuate:** approx. 2.5 lbs

**Mounting:** Inline or direct to fitting

**Ports:** Inlet - 10-32, Outlet - 10-32

**Material:** Nickel plated brass

**Temperature Range:** 32° to 230° F

← open  
→ closed

## J-SERIES SLEEVE VALVE

### Features

- Compact size, rugged construction
- Variety of inlet and outlet porting eliminates fittings
- Large flow capacity
- No cross-over between inlet and exhaust ports
- Corrosion resistant electroless nickel plated brass body
- Anodized aluminum sleeve for corrosion resistance
- Smooth operation, low sliding friction
- Buna-N seals; (Viton® available)

J S L V - □ - □ □ □ □

### Valve Type

2 - 2 way  
3 - 3 way

### Inlet Thread Type

M - Male Thread  
F - Female Thread

### Outlet Thread Type

M - Male Thread  
F - Female Thread

### J-Series Sleeve Valve

J - J-Series  
SL - Sleeve  
V - Valve

### Inlet Thread Size

2 - 1/8" pipe  
4 - 1/4" pipe

### Outlet Thread Size

2 - 1/8" pipe  
4 - 1/4" pipe

Model #	Type	Inlet Thread	Outlet Thread
JSLV-2-F2M2 JSLV-3-F2M2	2-way 3-way	1/8" Female Pipe	1/8" Male Pipe 1/8" Male Pipe
JSLV-2-M2F2 JSLV-3-M2F2	2-way 3-way	1/8" Male Pipe	1/8" Female Pipe 1/8" Female Pipe
JSLV-2-F4M4 JSLV-3-F4M4	2-way 3-way	1/4" Female Pipe	1/4" Male Pipe 1/4" Male Pipe
JSLV-2-M4M4 JSLV-3-M4F4	2-way 3-way	1/4" Male Pipe	1/4" Female Pipe 1/4" Female Pipe

Clippard J-Series sleeve valves with 1/8 NPT and 1/4" NPT ports offer large flow capability with a relatively short stroke in 2-way and 3-way valves, and no cross-over between inlet and exhaust on the 3-way models.

The JSLV-2 2-way valve and the JSLV-3 3-way valve combine high flow with small size. Unlike ball valves, sleeve valves require no space for a handle. They also provide flexibility in pipe connections and are available with either male or female threads or combinations of both.

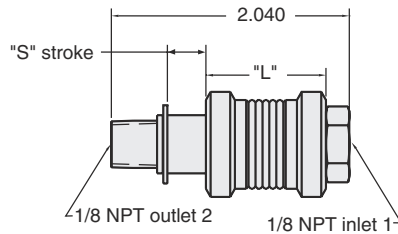
The JSLV-2 and JSLV-3 valves feature a smooth opening stroke during which inlet air is directed to the outlet. During the closing stroke, in the opposite direction of travel, the outlet is closed

from the inlet and in the JSLV-3 version, the outlet is then exhausted to atmosphere without the inlet ever being connected to exhaust. Rugged and compact in size, the J-Series sleeve valves are constructed of corrosion resistant materials. The main body is electroless nickel plated brass and the sleeve is anodized aluminum. The seals are Buna-N.

## JSLV-□ - F2M2



2-way or 3-way sleeve valve



**Medium:** air, water, or oil

**Input Pressure:** 150 psig max.

**Air Flow:** 1/8 NPT: @100 psig - 43 SCFM

**Force to Actuate:** approx. 8 lbs

**Mounting:** Inline or direct to fitting

**Ports:** Inlet - 1/8 NPT, Outlet - 1/8 NPT

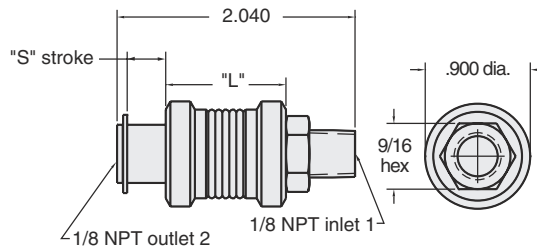
**Temperature Range:** 32° to 230° F

Model#	"L"	"S"
JSLV-2-F2M2	1.155"	.260"
JSLV-3-F2M2	1.030"	.385"

## JSLV-□ - M2F2



2-way or 3-way sleeve valve



**Medium:** air, water, or oil

**Input Pressure:** 150 psig max.

**Air Flow:** 1/8 NPT: @100 psig - 43 SCFM

**Force to Actuate:** approx. 8 lbs

**Mounting:** Inline or direct to fitting

**Ports:** Inlet - 1/8 NPT, Outlet - 1/8 NPT

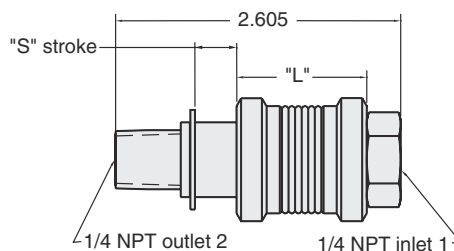
**Temperature Range:** 32° to 230° F

Model#	"L"	"S"
JSLV-2-M2F2	1.155"	.260"
JSLV-3-M2F2	1.030"	.385"

## JSLV-□ - F4M4



2-way or 3-way sleeve valve



**Medium:** air, water, or oil

**Input Pressure:** 150 psig max.

**Air Flow:** 1/4 NPT: @100 psig - 70 SCFM

**Force to Actuate:** approx. 8 lbs

**Mounting:** Inline or direct to fitting

**Ports:** Inlet - 1/4 NPT, Outlet - 1/4 NPT

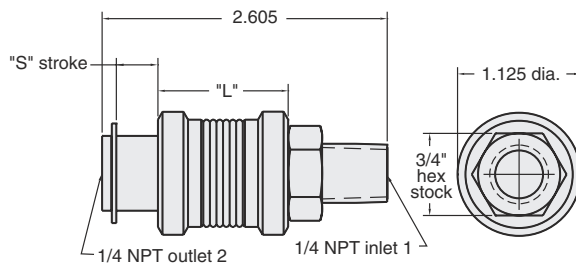
**Temperature Range:** 32° to 230° F

Model#	"L"	"S"
JSLV-2-F4M4	1.325"	.305"
JSLV-3-F4M4	1.190"	.460"

## JSLV-□ - M4F4



2-way or 3-way sleeve valve



**Medium:** air, water, or oil

**Input Pressure:** 150 psig max.

**Air Flow:** 1/4 NPT: @100 psig - 70 SCFM

**Force to Actuate:** approx. 8 lbs

**Mounting:** Inline or direct to fitting

**Ports:** Inlet - 1/8 NPT, Outlet - 1/8 NPT

**Temperature Range:** 32° to 230° F

Model#	"L"	"S"
JSLV-2-M4F4	1.325"	.305"
JSLV-3-M4F4	1.190"	.460"